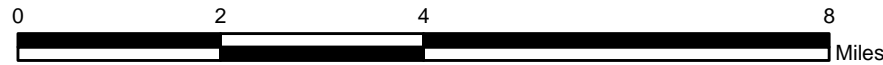


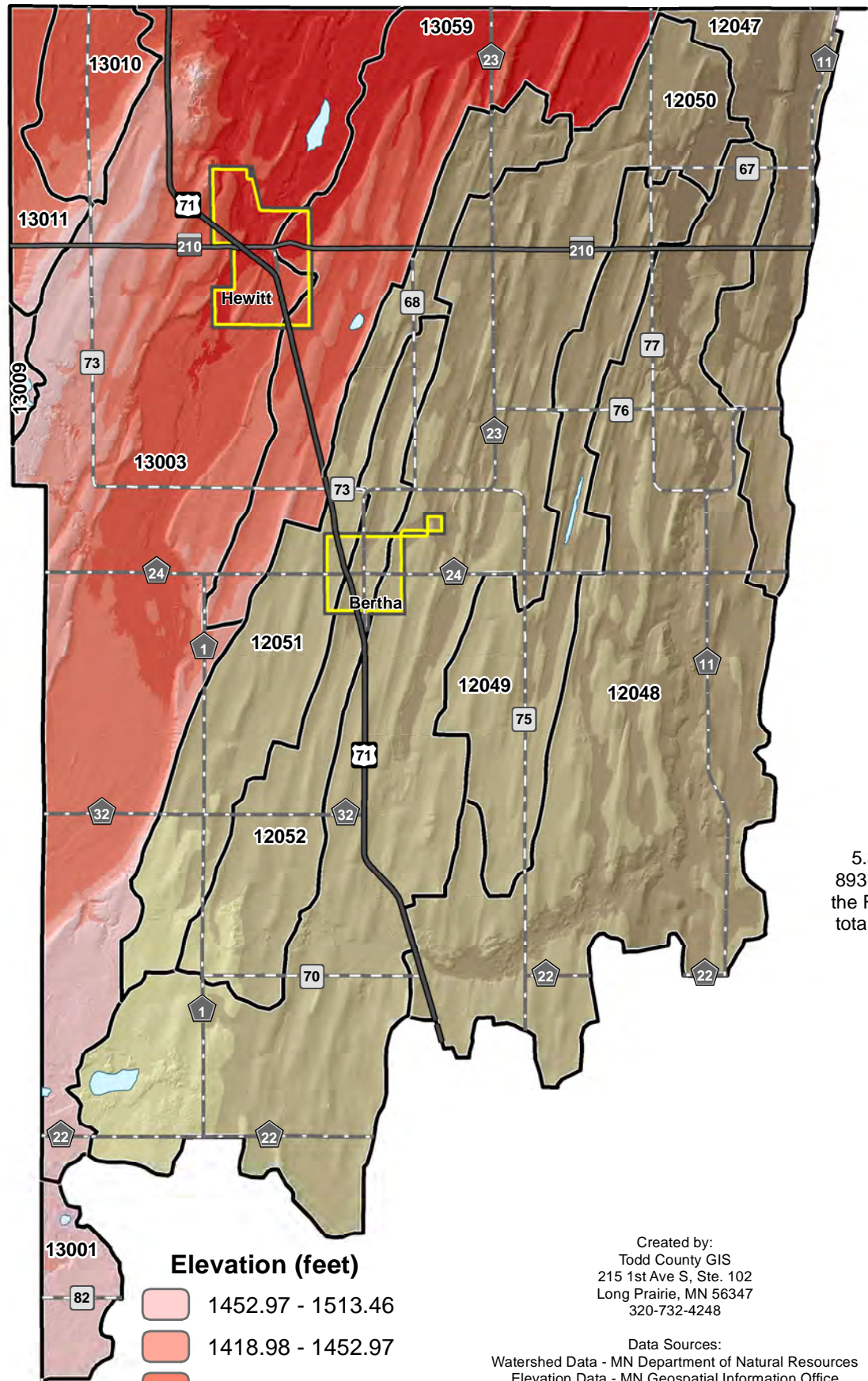
# CROW WING AND REDEYE WATERSHEDS



- Minor Watershed Boundary
- Lake
- City Limit
- Divided U.S. Highway
- U.S. Highway
- State Highway
- County State Aid Highway
- County Road

### Elevation (feet)

- 1448.34 - 1507.37
- 1389.31 - 1448.34
- 1330.28 - 1389.31
- 1271.25 - 1330.28
- 1212.23 - 1271.25



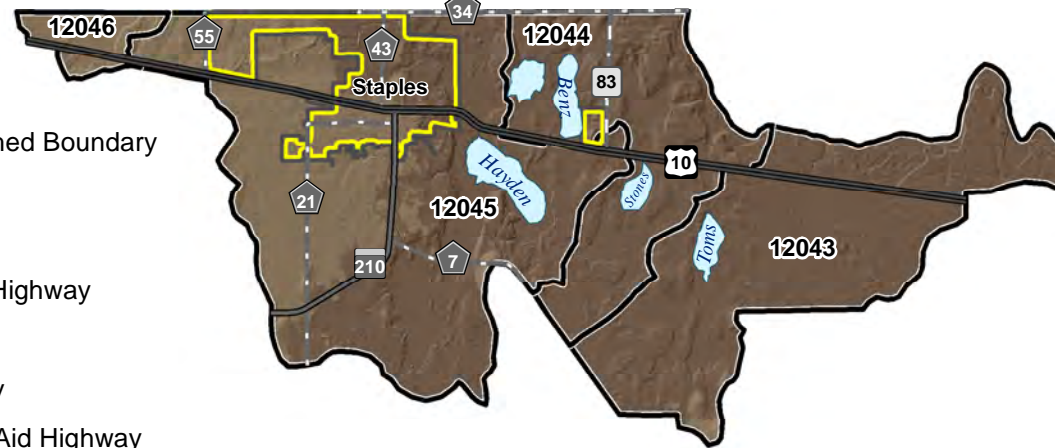
### Elevation (feet)

- 1452.97 - 1513.46
- 1418.98 - 1452.97
- 1394.51 - 1418.98
- 1371.40 - 1394.51
- 1340.13 - 1371.40

Created by:  
Todd County GIS  
215 1st Ave S, Ste. 102  
Long Prairie, MN 56347  
320-732-4248

Data Sources:  
Watershed Data - MN Department of Natural Resources  
Elevation Data - MN Geospatial Information Office  
County Data - Todd County GIS

Todd County GIS has made every effort to provide the most accurate and up-to-date information available and cannot be held responsible for any unforeseen errors or omissions.



5.30% (47.40 out of 893.86 square miles) of the Redeye Watershed's total area is within Todd County.

5.20% (103.09 out of 1982.75 square miles) of the Crow Wing Watershed's total area is within Todd County.

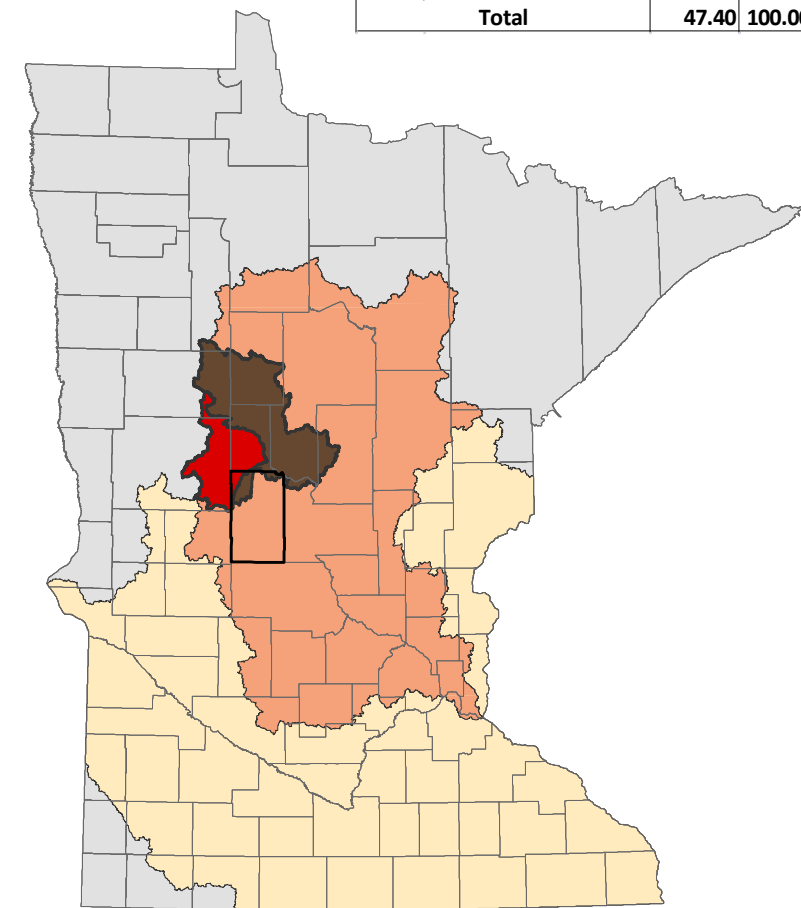
4.84% (47.40 out of 979.36 square miles) of Todd County is drained by the Redeye Watershed.

10.53% (103.09 out of 979.36 square miles) of Todd County is drained by the Crow Wing Watershed.

### MINOR WATERSHEDS

ID #	Stream Name	Area (sq. miles)	Percent of Total
12043	Crow Wing River	6.56	6.37%
12044	Crow Wing River	4.38	4.24%
12045	Hayden Creek	10.83	10.50%
12046	Crow Wing River	0.61	0.59%
12047	Partridge River	6.02	5.84%
12048	Partridge River	23.75	23.04%
12049	Egly Creek	7.46	7.23%
12050	Little Partridge Creek	28.02	27.19%
12051	Bear Creek	9.33	9.05%
12052	County Ditch #15	6.12	5.94%
<b>Total</b>		<b>103.09</b>	<b>100.00%</b>

13001	Annalaide Lake Ditch	1.78	3.76%
13003	Wing River	29.71	62.69%
13009	Oak Creek	0.40	0.84%
13010	Whiskey Creek	2.69	5.68%
13011	Union Creek	1.85	3.90%
13059	Thomas Creek	10.96	23.13%
<b>Total</b>		<b>47.40</b>	<b>100.00%</b>



### DNR Level 4 Major Watershed

- Crow Wing River
- Redeye River

### DNR Level 2 Major Watershed

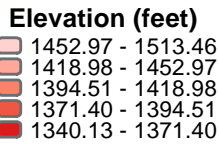
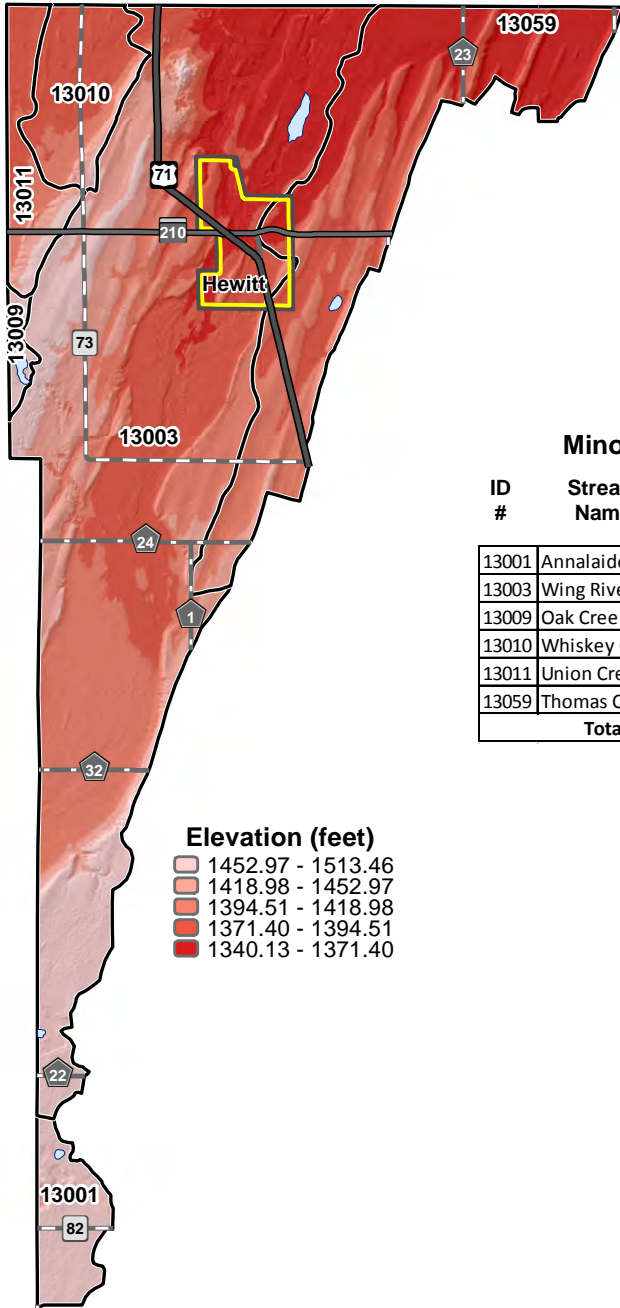
- Mississippi Headwaters

### DNR Level 1 Major Watershed

- Upper Mississippi
- Todd County Boundary
- County Boundary

# Redeye Watershed

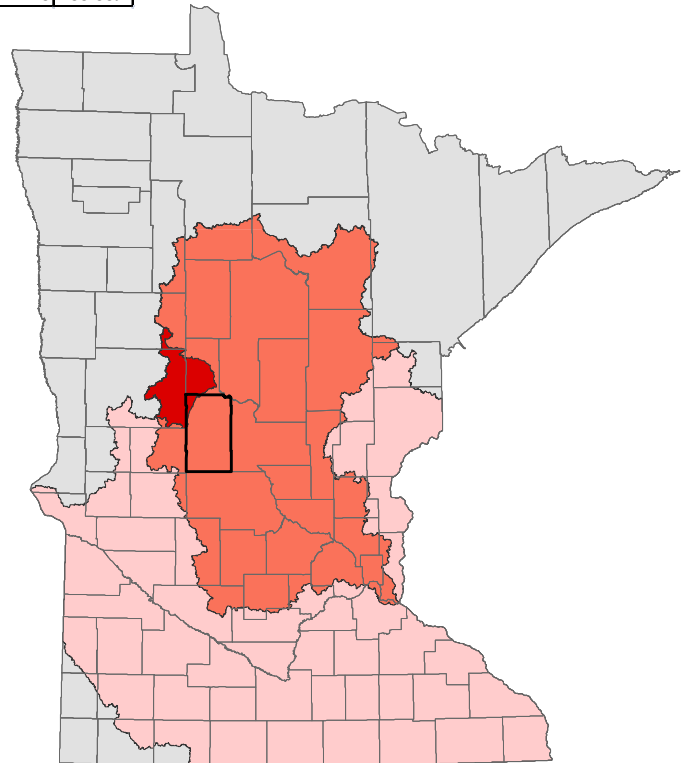
## Minor Watersheds



- Minor Watershed Boundary
- Lake
- City Limit
- U.S. Highway
- State Highway
- County State Aid Highway
- County Road

### Minor Watersheds

ID #	Stream Name	Area (sq. miles)	Percent of Total
13001	Annalaide Lake Ditch	1.78	3.76%
13003	Wing River	29.71	62.69%
13009	Oak Creek	0.40	0.84%
13010	Whiskey Creek	2.69	5.68%
13011	Union Creek	1.85	3.90%
13059	Thomas Creek	10.96	23.13%
<b>Total</b>		<b>47.40</b>	<b>100.00%</b>



**Created by:**  
 Todd County GIS  
 215 1st Ave S, Ste. 102  
 Long Prairie, MN 56347  
 320-732-4248

**Data Sources:**  
 Watershed Data - MN DNR  
 Impaired Waters - MN PCA  
 County Data - Todd County GIS

Todd County GIS has made every effort to provide the most accurate and up-to-date information available and cannot be held responsible for any unforeseen errors or omissions.

**HUC 8, DNR Level 4 Major Watershed**

Redeye River

**HUC 4, DNR Level 2 Major Watershed**

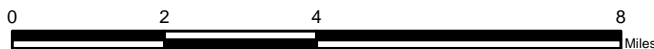
Mississippi Headwaters

**HUC 2, DNR Level 1 Major Watershed**

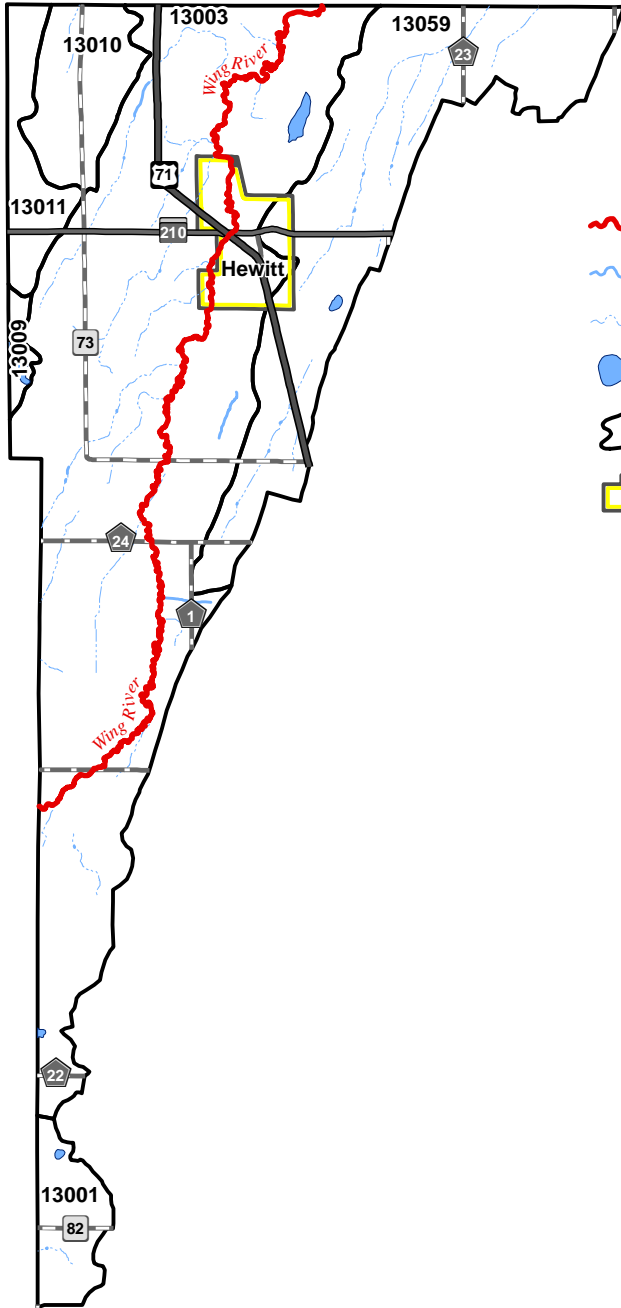
Upper Mississippi

Todd County Boundary

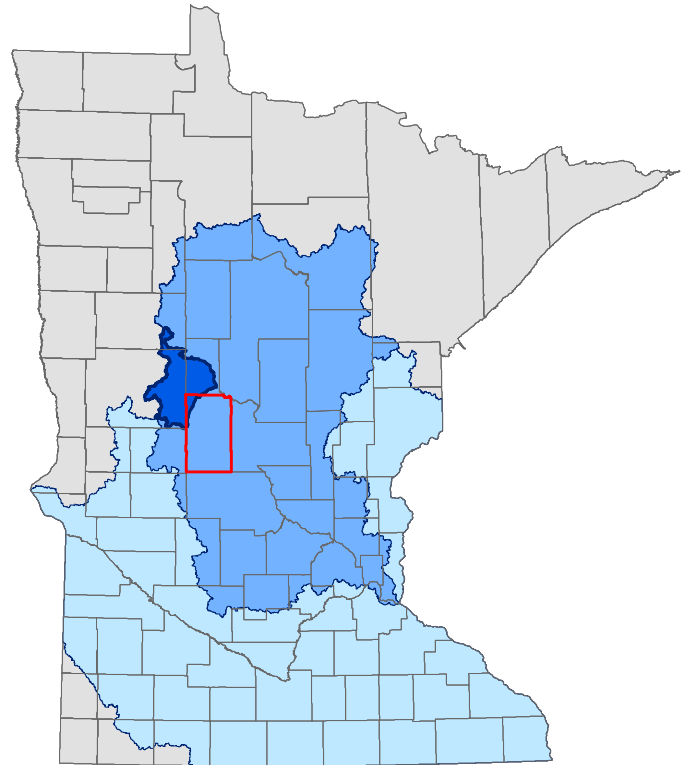
County Boundary



# Redeye Watershed Impaired Waters



- Impaired Stream
- Perennial Stream
- Intermittent Stream
- Lake
- Minor Watershed Boundary
- City Limit
- U.S. Highway
- State Highway
- County State Aid Highway
- County Road



**Created by:**  
 Todd County GIS  
 215 1st Ave S, Ste. 102  
 Long Prairie, MN 56347  
 320-732-4248

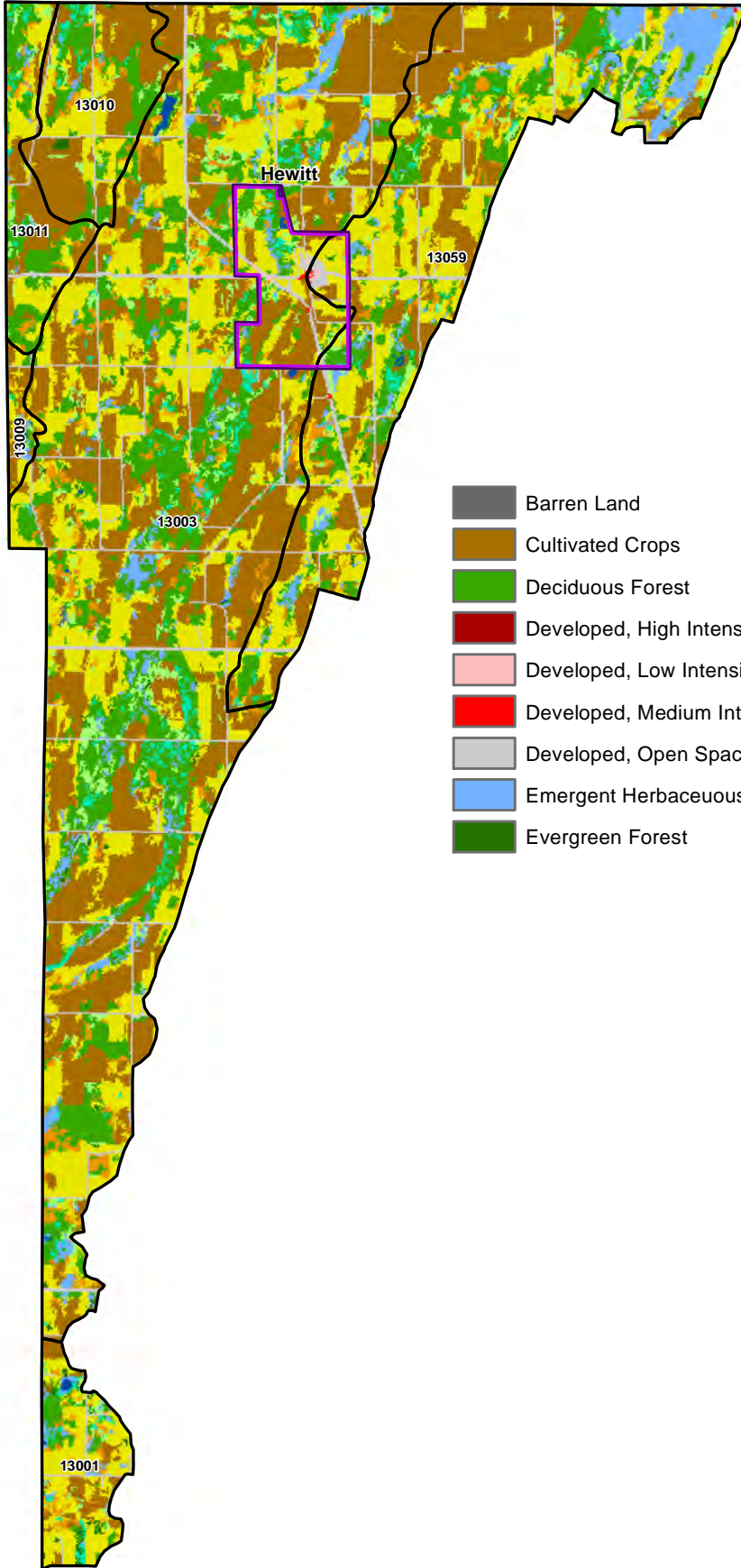
**Data Sources:**  
 Watershed Data - MN DNR  
 Impaired Waters - MN PCA  
 County Data - Todd County GIS

Todd County GIS has made every effort to provide the most accurate and up-to-date information available and cannot be held responsible for any unforeseen errors or omissions.

- HUC 8, DNR Level 4 Major Watershed
- HUC 4, DNR Level 2 Major Watershed
- HUC 2, DNR Level 1 Major Watershed
- Todd County Boundary
- County Boundary
- Redeye River
- Mississippi Headwaters
- Upper Mississippi



# Redeye Watershed Land Cover



- Barren Land
- Cultivated Crops
- Deciduous Forest
- Developed, High Intensity
- Developed, Low Intensity
- Developed, Medium Intensity
- Developed, Open Space
- Emergent Herbaceous Wetlands
- Evergreen Forest

- Hay/Pasture
- Herbaceous
- Mixed Forest
- Open Water
- Shrub/Scrub
- Woody Wetlands
- Minor Watershed Boundary
- City Limit

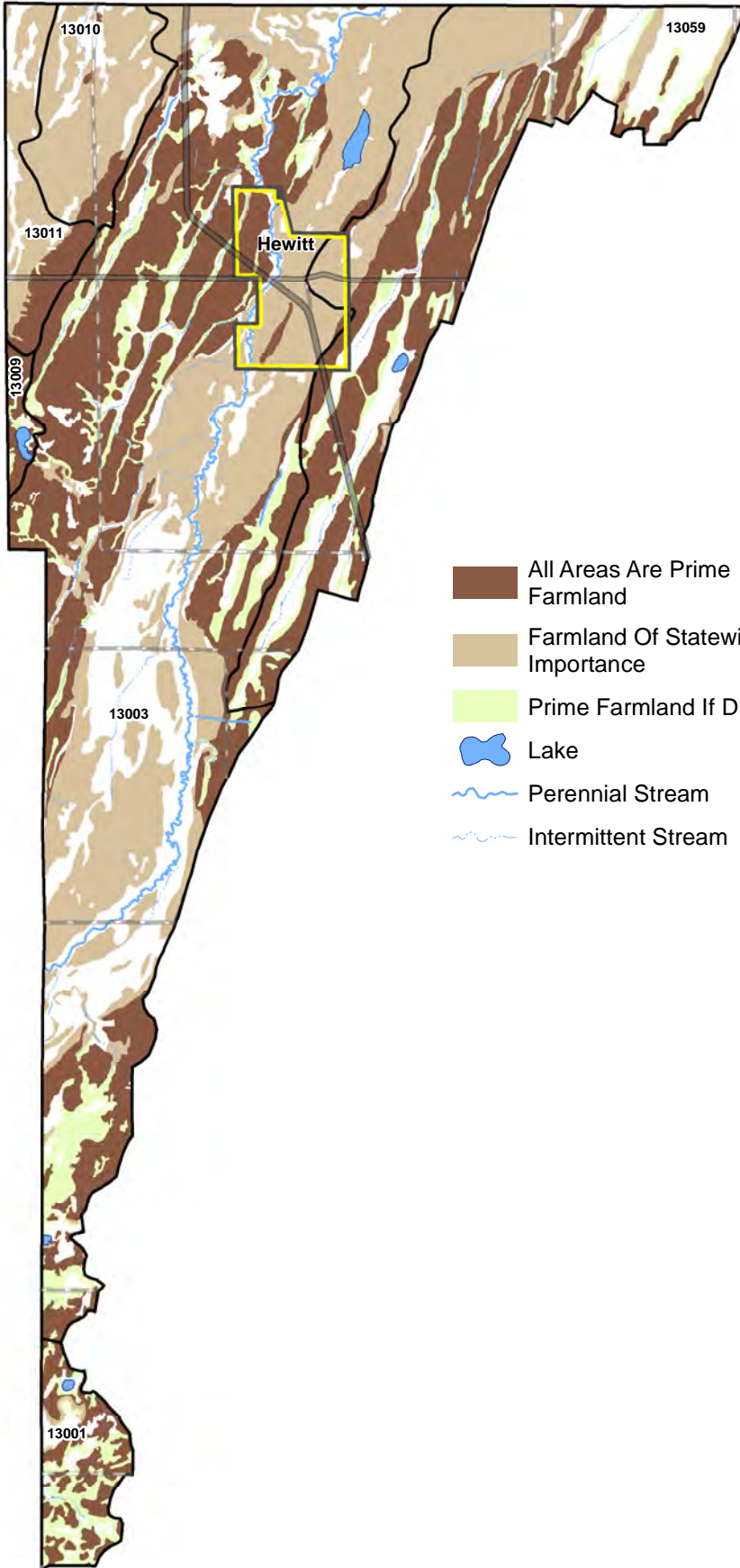
**Created by:**  
 Todd County GIS  
 215 1st Ave S, Ste. 102  
 Long Prairie, MN 56347  
 320-732-4248







**Data Sources:**  
 Land Cover Data - MRLC  
 Watershed Data - MN DNR  
 County Data - Todd County GIS



Todd County GIS has made every effort to provide the most accurate and up-to-date information available and cannot be held responsible for any unforeseen errors or omissions.

# Redeye Watershed Prime Farmland



-  All Areas Are Prime Farmland
-  Farmland Of Statewide Importance
-  Prime Farmland If Drained
-  Lake
-  Perennial Stream
-  Intermittent Stream

-  Minor Watershed Boundary
-  City Limit
-  U.S. Highway
-  State Highway
-  County State Aid
-  County Road

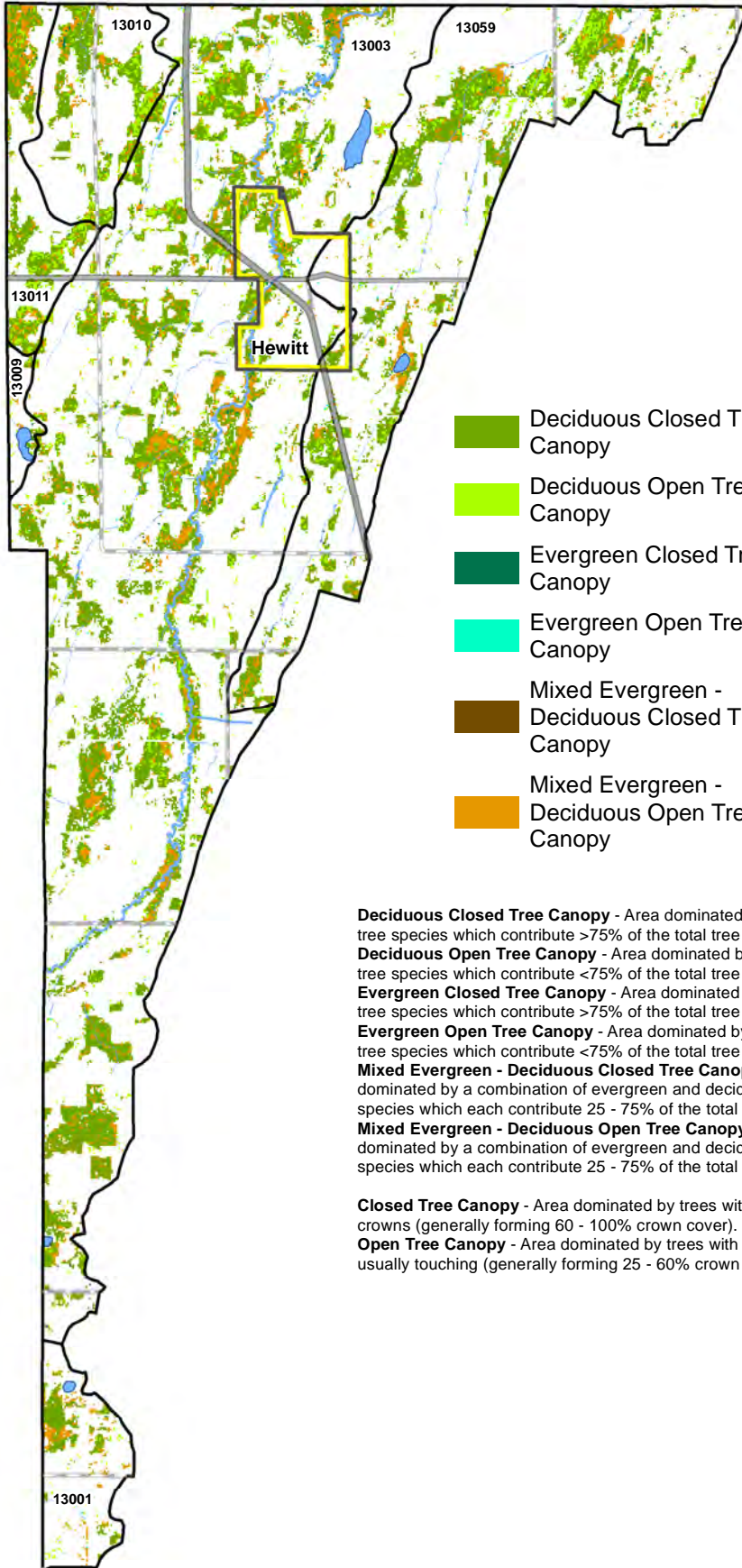
**Created by:**  
 Todd County GIS  
 215 1st Ave S, Ste. 102  
 Long Prairie, MN 56347  
 320-732-4248

**Data Sources:**  
 Farmland Data - USDA  
 Watershed Data - MN DNR  
 County Data - Todd County GIS



Todd County GIS has made every effort to provide the most accurate and up-to-date information available and cannot be held responsible for any unforeseen errors or omissions.

# Redeye Watershed Forests



- Deciduous Closed Tree Canopy
- Deciduous Open Tree Canopy
- Evergreen Closed Tree Canopy
- Evergreen Open Tree Canopy
- Mixed Evergreen - Deciduous Closed Tree Canopy
- Mixed Evergreen - Deciduous Open Tree Canopy

- Perennial Stream
- Intermittent Stream
- Lake
- Minor Watershed Boundary
- City Limit
- U.S. Highway
- State Highway
- County State Aid
- County Road

**Deciduous Closed Tree Canopy** - Area dominated by deciduous tree species which contribute >75% of the total tree cover.  
**Deciduous Open Tree Canopy** - Area dominated by deciduous tree species which contribute <75% of the total tree cover.  
**Evergreen Closed Tree Canopy** - Area dominated by evergreen tree species which contribute >75% of the total tree cover.  
**Evergreen Open Tree Canopy** - Area dominated by evergreen tree species which contribute <75% of the total tree cover.  
**Mixed Evergreen - Deciduous Closed Tree Canopy** - Area dominated by a combination of evergreen and deciduous tree species which each contribute 25 - 75% of the total tree cover.  
**Mixed Evergreen - Deciduous Open Tree Canopy** - Area dominated by a combination of evergreen and deciduous tree species which each contribute 25 - 75% of the total tree cover.

**Closed Tree Canopy** - Area dominated by trees with interlocking crowns (generally forming 60 - 100% crown cover).  
**Open Tree Canopy** - Area dominated by trees with crowns not usually touching (generally forming 25 - 60% crown cover).

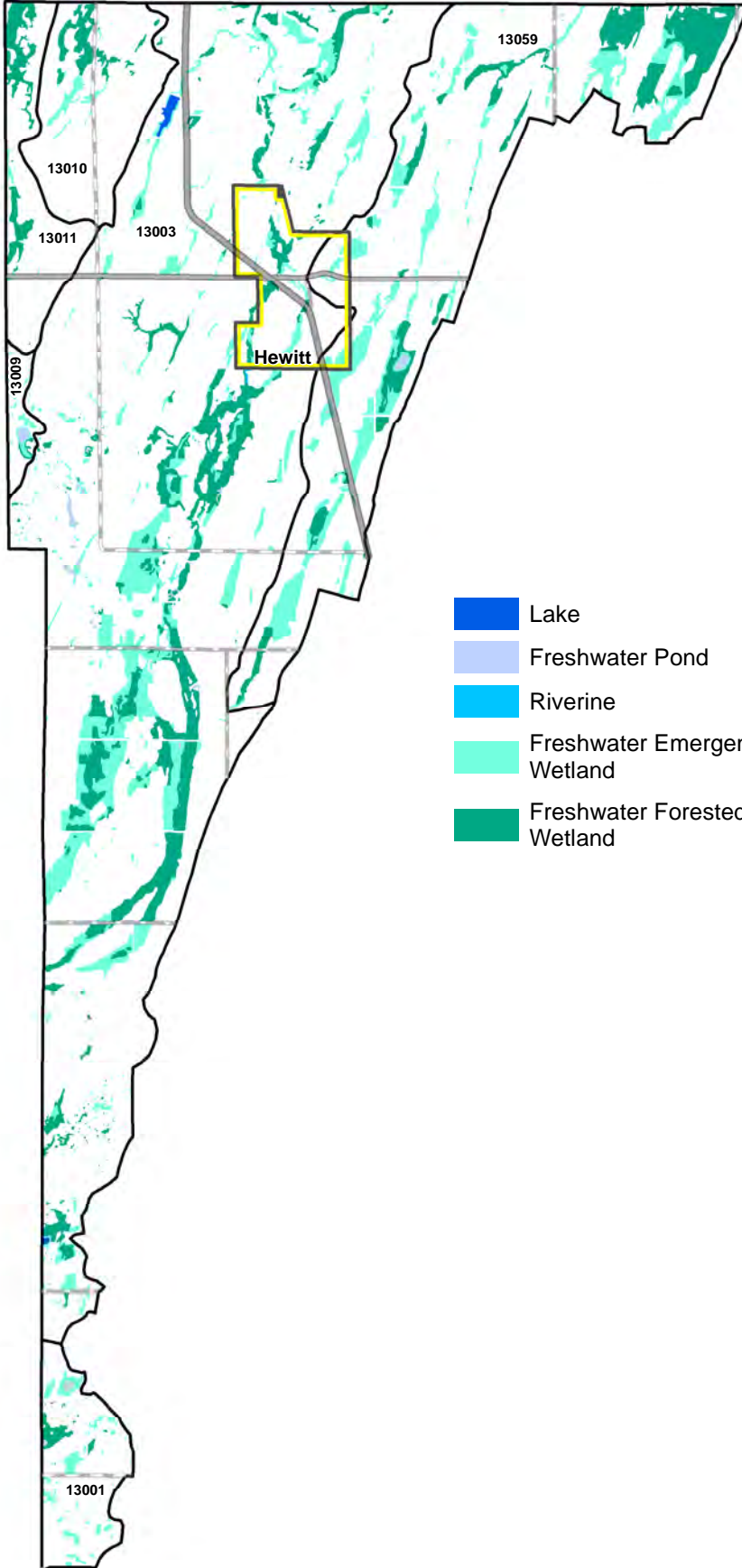
**Created by:**  
 Todd County GIS  
 215 1st Ave S, Ste. 102  
 Long Prairie, MN 56347  
 320-732-4248

**Data Sources:**  
 Vegetation Data - USGS  
 Watershed Data - MN DNR  
 County Data - Todd County GIS



Todd County GIS has made every effort to provide the most accurate and up-to-date information available and cannot be held responsible for any unforeseen errors or omissions.

# Redeye Watershed Wetlands



- Lake
- Freshwater Pond
- Riverine
- Freshwater Emergent Wetland
- Freshwater Forested/Shrub Wetland

- Minor Watershed Boundary
- City Limit
- U.S. Highway
- State Highway
- County State Aid
- County Road

**Created by:**

Todd County GIS  
215 1st Ave S, Ste. 102  
Long Prairie, MN 56347  
320-732-4248

**Data Sources:**

Wetland Data - USFWS  
Watershed Data - MN DNR  
County Data - Todd County GIS



Todd County GIS has made every effort to provide the most accurate and up-to-date information available and cannot be held responsible for any unforeseen errors or omissions.